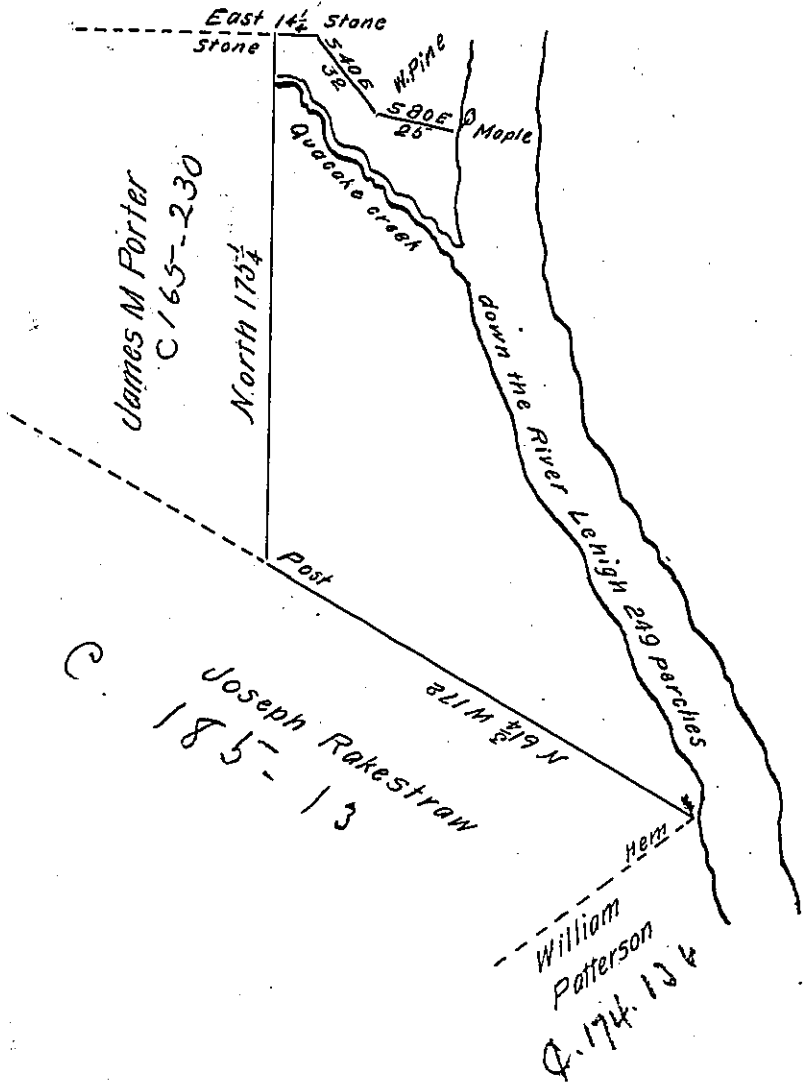


William Meyer

C 143-34



The Courses & Distances
down the River Lehigh are

1. S. 2. E	42
2. S. 17. E	9
3. S. 22. E	25
4. S. 26. E	101
5. S. 30. E	60
6. S. 20. E	18
	<u>249</u>

By Virtue of a Warrant dated the 12th July 1784 Surveyed the 18th April 1823 to Stephen Balliet the above described tract of land situate on the West side of Lehigh River including the mouth of Quacake creek in Lausanne township Northampton County containing ninety seven acres and a quarter and the allowance of six P. Cent &c

Signed George Palmer D.S.

Examined and approved the 7th February 1834.

To Jacob Spangler Esq^r }
Surreyor General }

P Sam Rees D.S

IN TESTIMONY that the above is a copy of the original remaining on file in the Department of Internal Affairs of Pennsylvania, made conformably to an Act of Assembly approved the 16th day of February, 1833, I have hereunto set my Hand and caused the Seal of said Department to be affixed at Harrisburg, thiseighteenth..... day of.....January..... 1904.

Grace D. Brown
Secretary of Internal Affairs.